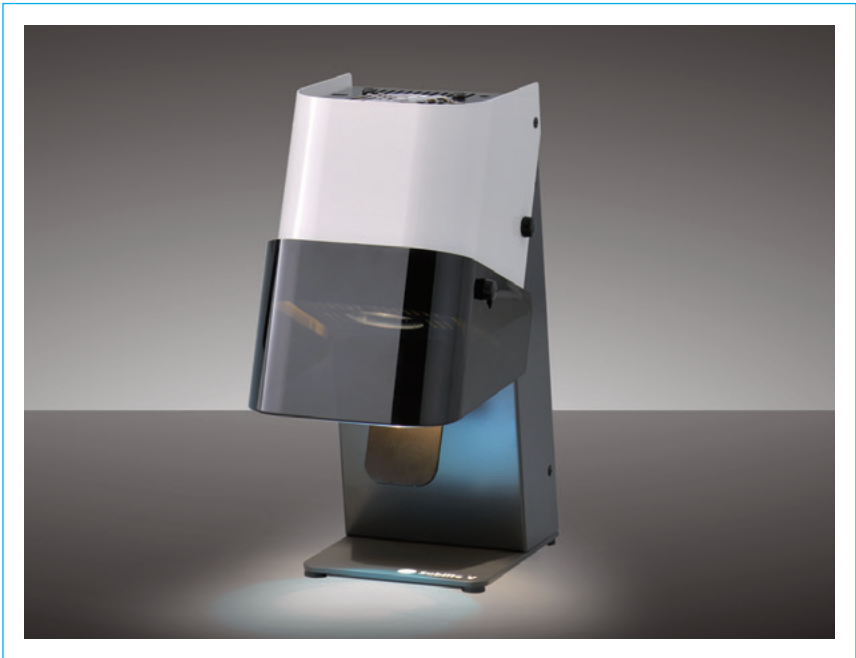


Sublite V

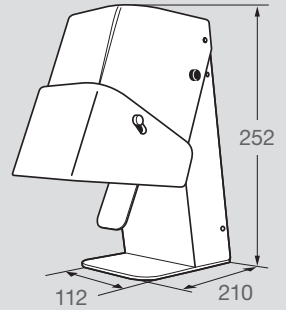
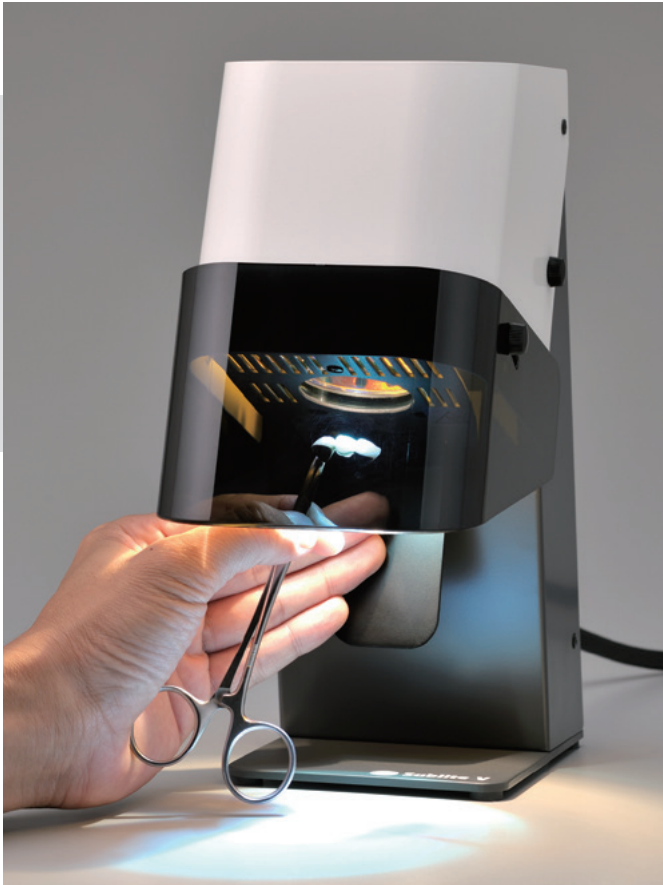
Time-saving and professional
pre-polymerisation



SUBLITE V

Pre-polymerisation unit for dental laboratories

The powerful Sublite V light-curing unit for time-saving and professional pre-polymerisation features proven technology and a compact and appealing design. Perfectly matched to SHOFU's ceramic-filled microhybrid composites Ceramage, Ceramage Up and Solidex, it boosts the efficiency of your workflows.





The high-performance 150-W halogen lamp allows you to pre-polymerise an applied composite layer in just 5 seconds per tooth. Keeping the one-touch switch pressed starts a second curing programme for larger restorations with a maximum curing time of 20 seconds.

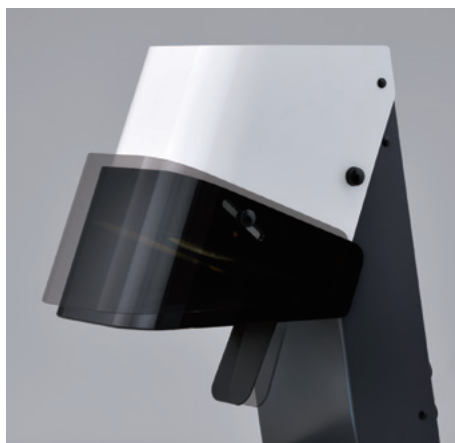
The unit's convenient one-hand operation and spacious curing area below the light guard also enable you to cure restorations on a working model.

BENEFITS

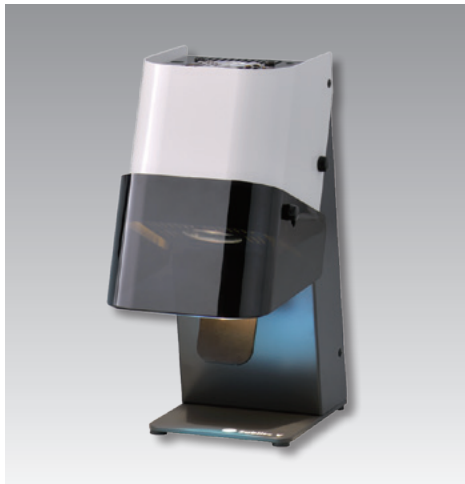
- Time-saving pre-polymerisation on the working model
- Light guard horizontally and vertically adjustable
- Convenient one hand operation
- Two curing programmes (tap on switch: 5 sec cure / keep switch pressed: max. 20 sec cure)

A variety of settings

The individual settings of the Sublite V are just as diverse as your working techniques. The position of the light guard can be adjusted horizontally and, by rotation, also vertically, for glare-free curing of your workpieces at any time, perfectly matched to your personal application needs.



Order information



Sublite V

incl. lamp
PN 5108

Specifications

- Light source:
1 JCR 110 V 150 W halogen lamp
- Spectral range: 400-550 nm
- Dimensions:
W 112 mm x D 210 mm x H 252 mm
- Weight: approx. 2.5 kg
- Supply voltage: 100 V - 240 V, 50/60 Hz
- Fuse: 2 x 1.6 A time-lag

Related products



Solidilite LED

incl. lamps
PN E031

Advanced LED light-curing unit with broad band of wavelengths for veneering composites and 3D printing materials



SHOFU INC., 11 Kamitakamatsu-cho, Fukuine, Higashiyama-ku, Kyoto 605-0983, Japan
SHOFU DENTAL GmbH An der Pönt 70, 40885 Ratingen, Germany, www.shofu.de

SHOFU is a registered trademark of SHOFU INC. All other trademarks and registered trademarks are the property of their respective holders.
SHOFU INC. reserves the right to change specifications without notice.